

PAGIX

Portable Wireless Controlled G6-HDX-ray system



The **PAGIX** G6-HDX-ray is a portable, wireless, easy to use and completely computerized Inspection System for the investigation of objects like parcels, boxes, luggage etc. The System consists of a large area high definition 48 megapixel imager, a high performance laptop, the X-Ray source and accessories.

Specific customised software and computer systems enables the unit to start within a few seconds. No knowledge of computer, operating systems or software is needed to operate. It only requires a simple click and drag operation on the mouse to adjust contrast, zoom in/out, or measure the length and angles on this imaging software dedicated to the Pagix G6-HDX-ray imager.

The **PAGIX** system works fully digital for failure-free operating and astonishing high quality pictures. The wireless connection allows up to 150m outdoor or 50m indoor distance for save operation.

The G6-HDX-ray is a fail-save, precise and easy to use equipment for law enforcement, police, airport and all kind of safety purposes. The system can also be used in any kind of material examination.

Technical Specifications

PAGIX

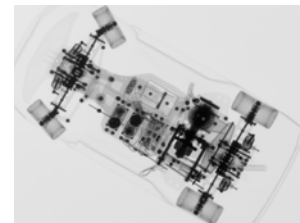
G6-HDX-ray imager



Imaging System	
Model	Pagix G6 HDX
Imaging Area	422 x 342mm (16.6 x 13.5 inch)
Pickup Device	High sensitive CCD sensor
Effective Pixel	7800 x 6100
Pixel Pitch	7.2 x 5.6 microns
Resolution AWG	40
Resolution lp/mm	>6
Dynamic Range	12 Bit / 4096
Data Output	BMP, JPEG, TIFF, GIF
Connectors	WLAN, 10/100 Mbps Ethernet
Supply	build in Battery Pack or 12V 8A external Power
Wireless Device	WLAN 802.11 b/g (up to 54 Mbit/s) WPA2 Encryption
Batteries	Lithium Battery Pack
Dimensions	650 x 520 x 58 mm (25.6 x 20.5 x 2.3 inch)
Weight	14 kg (30.8 lbs)
Power Adaptor	Universal AC 90V ~ 265V, 47Hz ~ 63Hz

PAGIX

G6-HDX Software



Software specification	
Multi image view	It can display 2,4,9 and 16 images on the screen
Display of images in normal, inverse, pseudo colour mode and zoom in all modes (The colour table for the pseudo colours can be individually modified by User)	
manual brightness control	
manual contrast control	
Histogram to verify the width and level of the image adjustment	
Measurement function	Lengths and angles
serially numbered overview	
direct print to optional printer	
direct write on CD/DVD	
low battery warning for imager and remote control	
several image filter and editing tools	

Technical Specifications

PAGIX

High Performance Laptop



Processor	up to date
System Memory	min. 2GB
Harddisk	min. 160GB SATA II
Combodrive	DVD/CD-R/RW
LAN/ WLAN/ Modem	on Board LAN and WLAN , Modem V.92 56K
Display	min. 15" WXGA TFT LCD
Battery	Li-Ion Battery-Life appr. 4 hours
Power Supply	100~240V, 50~60Hz AC
Operating System	Windows®XP
Operating Software	Special Customized Software for X-Ray Imaging and Controlling of all Parameters from Imager and X-Ray Source

PAGIX

X-Ray Source XR200



X-Ray Dose per Pulse	~3.1 mill roentgens @ 30mm form the front of the Unit
Number of Pulses per Exposure	1 ~ 99 adjustable by user
Number of Pulses per Battery Charge	4000
Number of Pulses per second	25
Expected Tube Life	100 000 Pulses
Max. Photon Energy	150 KVP
X-Ray Pulse Width	60 nanoseconds ($60 \times 10^{-9} \text{ s}^{-1}$)
Battery	14.4V 1 hour charging time
Max. Duty Cycle	200 Pulses every 4 minutes (3000 Pulse per hour)
Power Adaptor	100V ~ 120V or 220V ~ 230V, 50Hz ~ 60Hz
Environment	Operating Temperature : $-23^{\circ}\text{C} \sim 50^{\circ}\text{C}$
Physical	115(W) x 317(D) x 190(H) mm 5.5 Kg (all Dimensions with Battery Pack)
Manual Trigger	delayed action release (60s) for manual triggering
Switch-On	no Warm-Up required
X-Ray Leakage	see Manual from Golden Engineering, Inc. (USA)

The **PAGIX** System is delivered in two strong carrying cases



System dimensions

X-Ray Source:
49 x 38 x 20 cm
(19.3 x 15 x 7.9 inch)



Imager & Laptop:
84.7 x 72.2 x 46.3 cm
(33.36 x 28.44 x 18.23 Inch)

Optional Equipment

- Dual Energy Extension
- WLAN repeater for extended range
- Dosimeter with Charger
- Tripod for X-Ray Source
- Second Battery for XR200
- Beryllium-window-tube for XR200
- X-Ray Generator, Golden Inspector model xrs 3
- Portable Colour Printer
- Cable remote option

